



中山市宝利金电子有限公司  
zhongshan Baolijin Electronics Co. LTD.

# 各国插脚安规尺寸标准

www.docin.com

版 本: REV:1.1

文件编号: JX-WI-403-042

实施日期: 2013年10月18日

制订:

审核:

核准:

# 目 录

- 1、VDE欧规胶壳插脚：标准-EN 50075/IEC60083
- 2、BS英规胶壳插脚：标准-BS 1363
- 3、SAA澳规胶壳插脚：标准-AS/NZS 3112
- 4、UL美规胶壳插脚：标准-ANSI-NEMA WD6
- 5、CCC中国规胶壳插脚：标准-GB 1002-2008
- 6、Korea韩国胶壳插脚：标准-KSC8305
- 7、Brasil巴西规胶壳插脚：NBR14136
- 8、India印度胶壳插脚：标准IS1293
- 9、Argentina阿根廷胶壳插脚：IRAM2063
- 10、SASO 沙特胶壳插脚：SASO-2203
- 11、JAPAN 日本胶壳插脚：JISC 8303
- 12、小南非规胶壳插脚：SABS 164-1

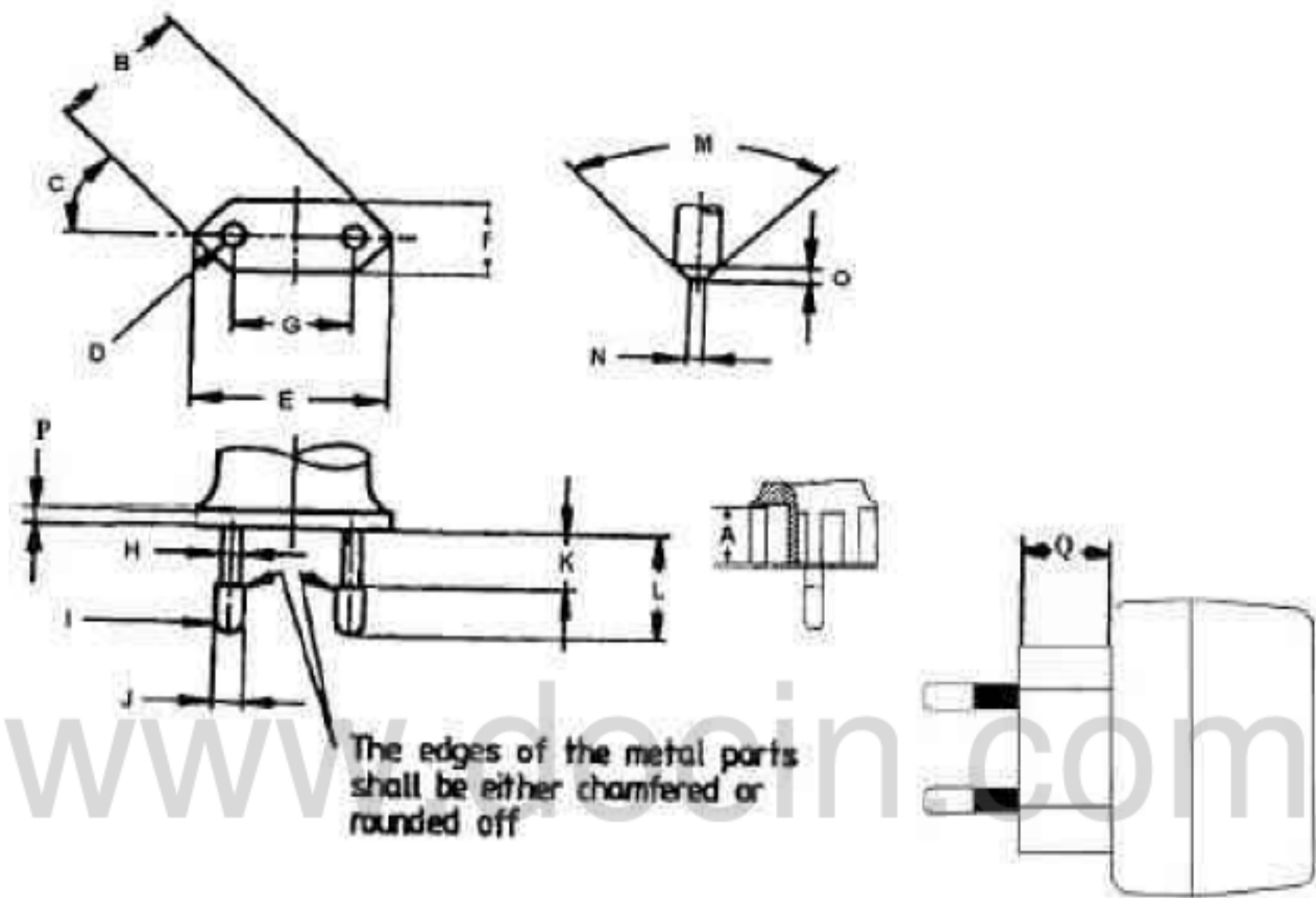
www.docin.com

## 修 订 记 录

### 2013-10-15修改：

- 1、 GB1002-2008版 CCC插脚（厚1.4-1.5mm）增加插头插销离边沿的距离不小于6.5mm。
- 2、 增加日规插脚安规尺寸图表，日规插脚（厚1.4-1.6mm）备注“L”的尺寸要求不大于0.9mm，及插头插销离边沿的距离不小于5.1mm。
- 3、 修改美规插脚安规尺寸，美规插脚（厚1.40-1.65mm），备注插头插销离边沿的距离不小于5.1mm。
- 4、 插脚图示缩小

**2PIN欧洲插脚** Two-pin plugs f (Up to 2.5 A rating) EN50075/IEC60083 - C5/CEE7/DIN49464



符号	标准值 (mm)	符号	标准值 (mm)
A	16.5 min.	H	从PIN脚与托台结合处上方4mm处之内的直径 $\leq 4.0$
B	25.6-26.6	H	从PIN脚与托台结合处上方4mm处的直径值 $\leq 3.8$
C	45°	J	3.94-4.06
D	R5.0-6.0	K	10.0-11.0
E	34.6-36.0	L	18.5-19.5
F	13.0-14.4	M	90° max.
G	PINS与台面结合处中心点间距18.0-19.2	N	0.7-1.7
G	PINS末端中心点间距17.0-18.0	O	2.0 max.

从外壳圆周面延伸到PIN脚与托台结合处任意点之间的距离最小为18mm。

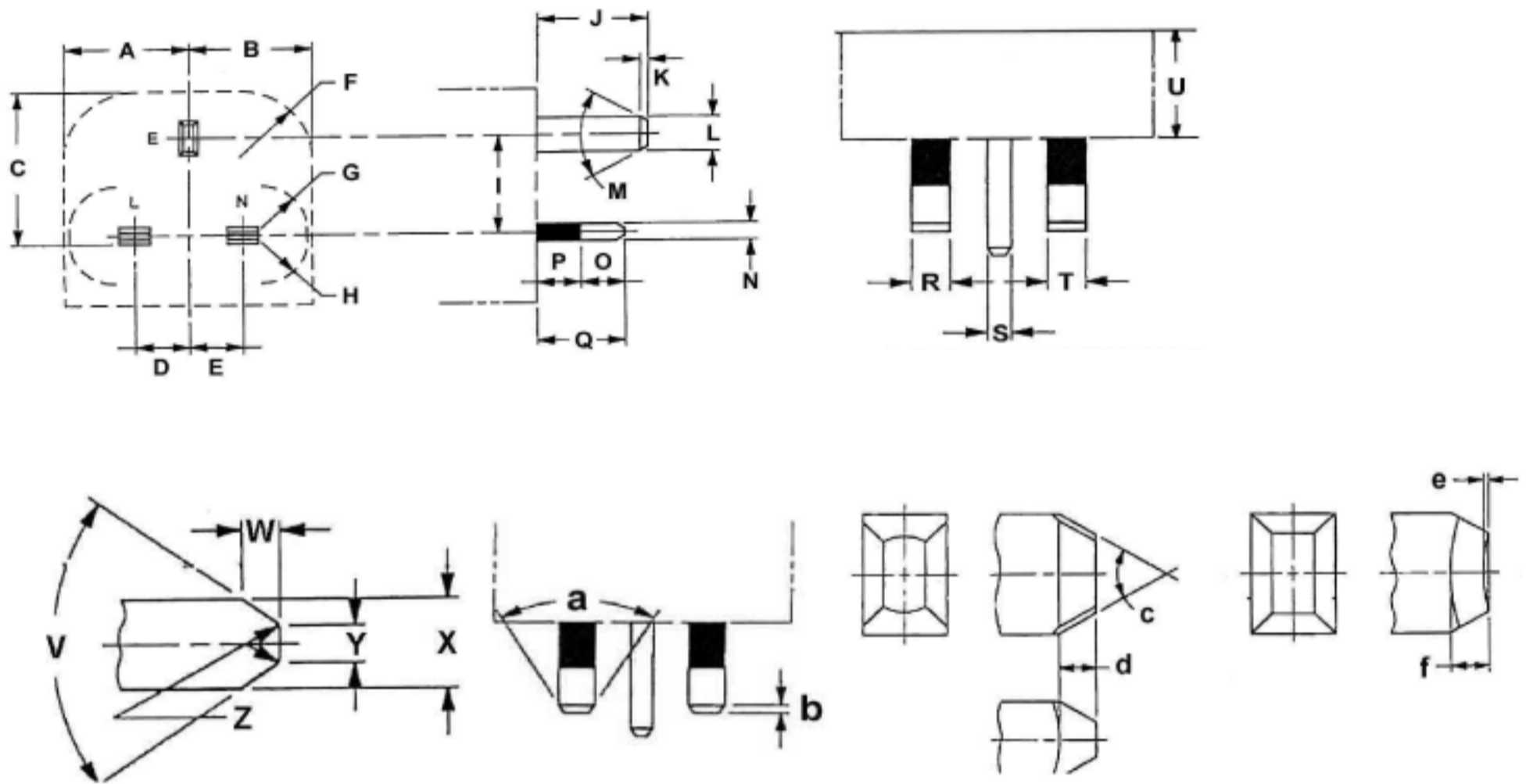
$P \geq 4.0, Q \geq 18.0$ , I: 金属下部结合部分边缘应光滑钝化,不得尖锐刺手。

此插脚适应国家包括:德国,俄罗斯,以色列

英国插脚



UK Plug Checking Form according to Figure 4 of BS1363BS-3



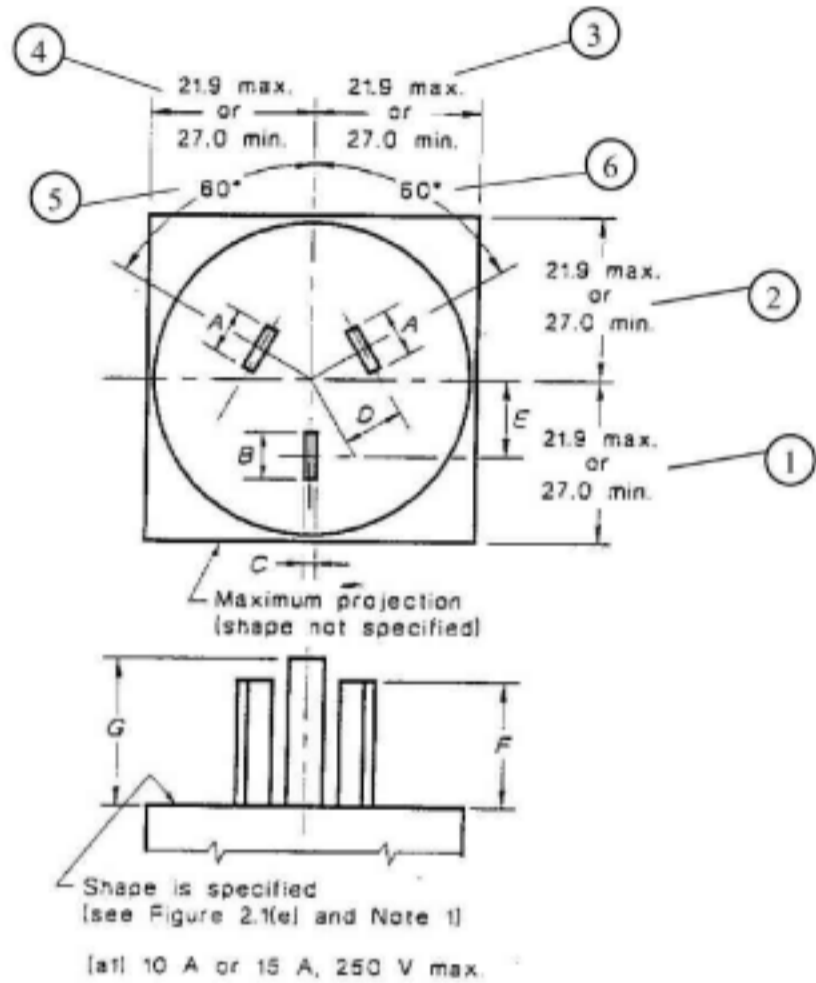
Grounding pin

Symbol	Requirement (mm)	Symbol	Requirement (mm)	Symbol	Requirement (mm)	Symbol	Requirement (mm)
A	25.37 max.	I	22.10-22.36	Q	17.2-18.2	Y	1.2-2.0
B	25.37 max.	J	22.23-23.23	R	6.22-6.48	Z	R 0.1-1.0
C	34.6 max.	K	1.35-1.85	S	3.90-4.05	a	58°-62°
D	11.05-11.18	L	7.80-8.05	T	6.22-6.48	b	1.35-1.85
E	11.05-11.18	M	58°-62°	U	6.35 min.	c	58°-62°
F	R 15 min.	N	3.90-4.05	V	60°-80°	d	1.35-1.85
G	R 9.5 min.	O	9.2 max.	W	1.35-1.85	e	0.2 max.
H	R 9.5 min.	P	9.5 max.	X	3.90-4.05	f	1.35-1.85

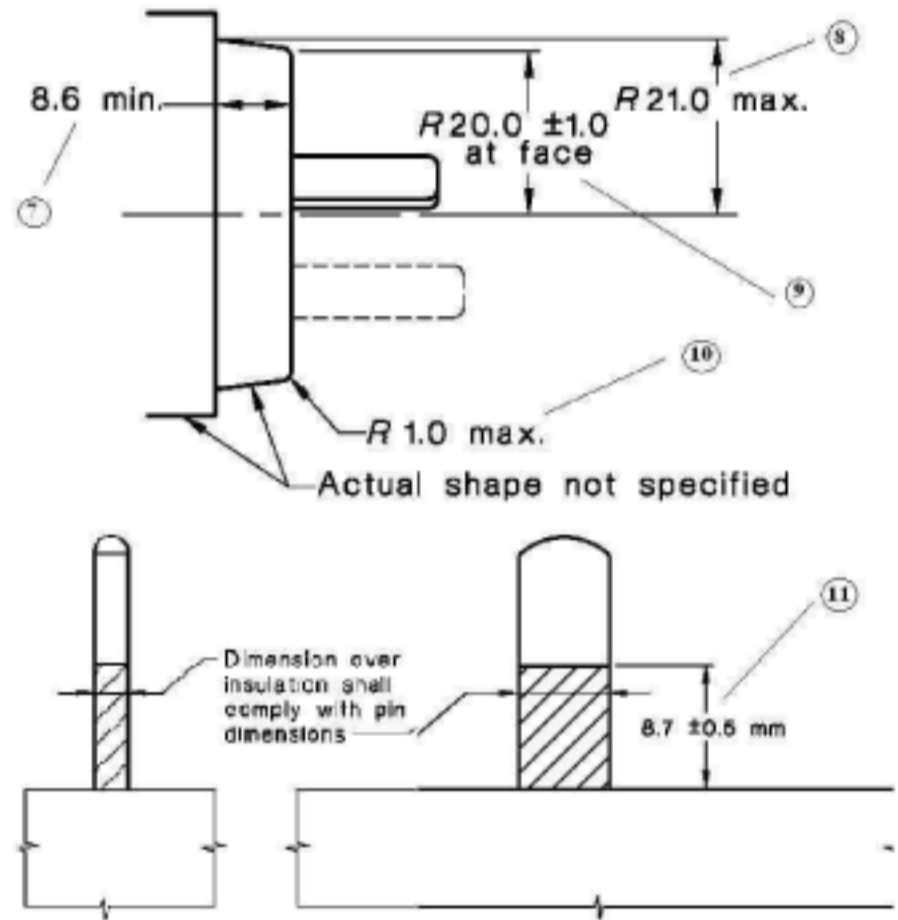
此插脚适应国家包括:英国、新加坡、马来西亚



Standard sheet Figure 2.1 (a1) or 2.1(c)



Standard sheet Figure 2.1 (e) and fig 2.4



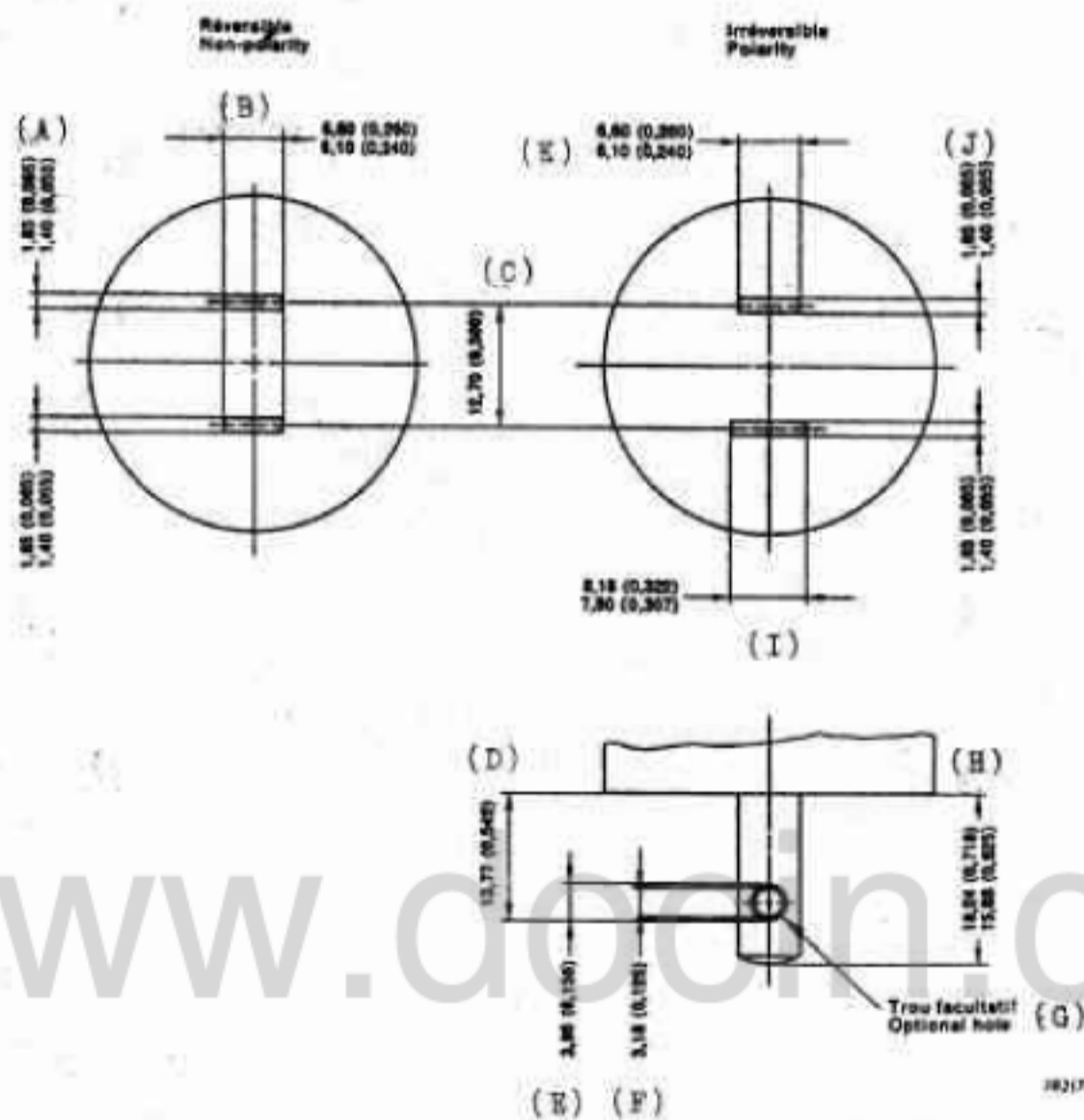
Position	Required (mm)	By Measurement (mm)	By the gauges in Figure A1
A	6.35±0.15		-
B	6.35±0.15		-
C	1.63 <sup>+0.15</sup> <sub>-0.05</sub>		-
D	7.92	--	
E	10.31	--	
F	17.06±0.4		-
G	19.94±0.8		
1、2、3、4	21.9 max. or 27.0 min.		-
5、6	60°	--	
7	8.6 min.		-
8	21.0 max.		-
9	20.0±1.0		-
10	1.0 max		-
11	8.7±0.5		-
Distance from projection part edge to L and N pins	9mm min.		

美国插脚 UL 插脚: According to UL1310/UL498/ UL817/UL1659/ANSI-NEMA WD 6-2002 Figure 1-15

1. All dimensions are in inches, unless otherwise specified.
2. Decimal dimensions without tolerances shall be subject to a plus or minus 0.005-inch tolerance.
3. Angular dimensions without tolerances shall be subject to a plus or minus 1 degree tolerance.



(美规)North American integrated plug according to NEMA 1-15 P for US type



1.5.2	TABLE: US plug dimension according to NEMA 1-15P (non polarity)			P
Part No.	Dimensions	Limit (mm)	Measured (mm)	Pass/Fail
A	Thickness of live pin	1.40-1.65		
B	Width of live pin	6.10-6.60		
C	Distance between two live pins (centre)	12.70±0.127		
D	Distance between hole and plug face (if hole used)	13.77±0.127		
E	Outer diameter of hole (if hole used)	3.96±0.127		
F	Inner diameter of hole (if hole used)	3.18±0.127		
H	Length of live pins	15.88-18.24		

备注:

关于电源插墙式插脚 (UL1310)中 7.16 条款要求: 起始于金属插脚的任意一点, 与金属插脚的托台圆周边之间的距离不得小于 5.1 mm。儿童玩具要求 7.9mm., 此处距离是指 adaptor 插入 socket 后, 金手指对 AC input blade 间之最近距离。



GB 1002—2008

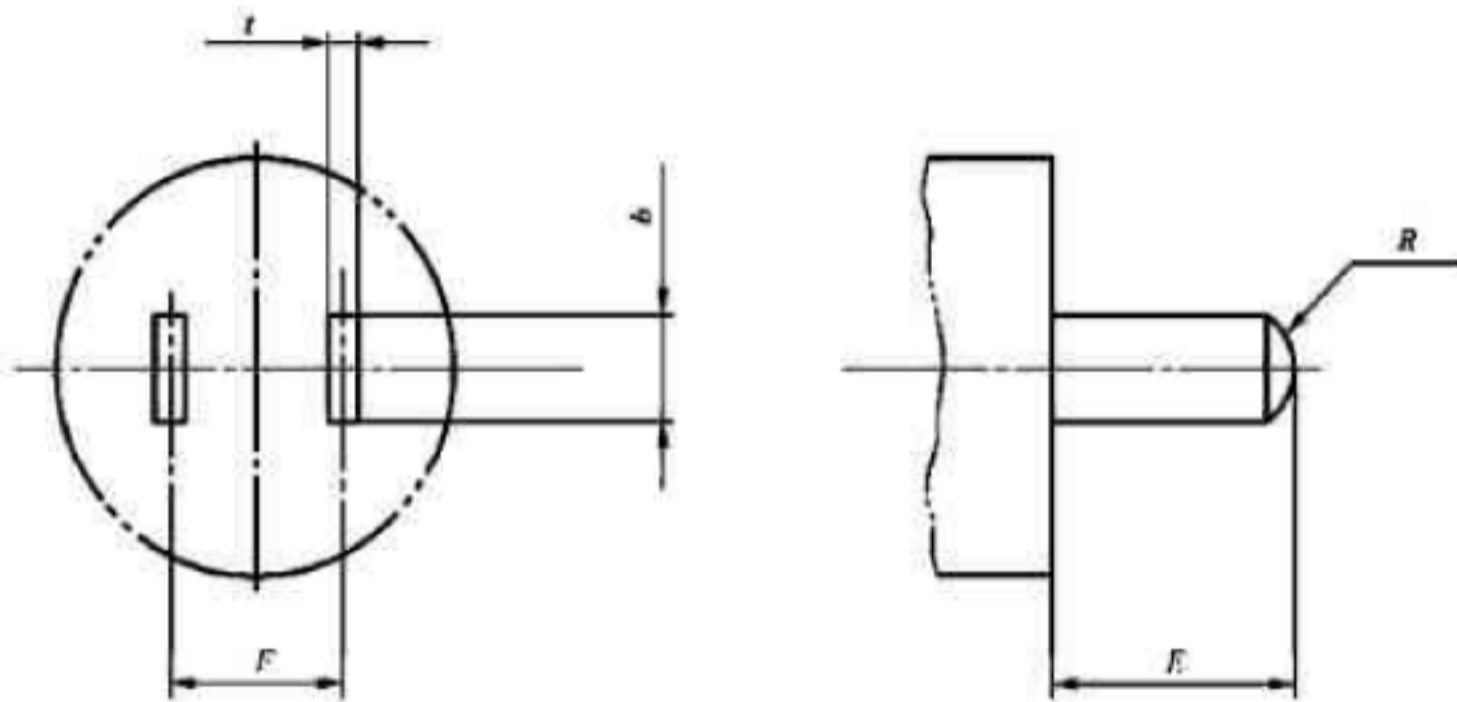


图 1 单相两极插头

表 1 单相两极插头基本参数和尺寸

基本参数		两极插头的主要尺寸/mm				
额定电压/ V	额定电流/ A	开档距离	插头插销尺寸			
		$F$	$t$	$b$	$E^a$	$R$
250	6 <sup>a</sup>	$12.7 \pm 0.14$	$1.5_{-0.1}^0$	$6.4_{-0.22}^0$	$16 \pm 0.35$	$6.0 \pm 1$
	10	$12.7 \pm 0.14$	$1.5_{-0.1}^0$	$6.4_{-0.22}^0$	$16 \pm 0.35$	$6.0 \pm 1$

<sup>a</sup> 仅作不可拆线插头用。  
<sup>b</sup> E 端部厚度适当倒角,推荐倒角长度最大为 1 mm。

备注：（2008版新增要求）

- 1、起始于金属插脚的任意一点，与金属插脚的托台圆周边之间的距离不得小于6.5 mm。
- 2、R角倒角弧高度约0.74-1mm（R角计算）。



GB 1002—2008

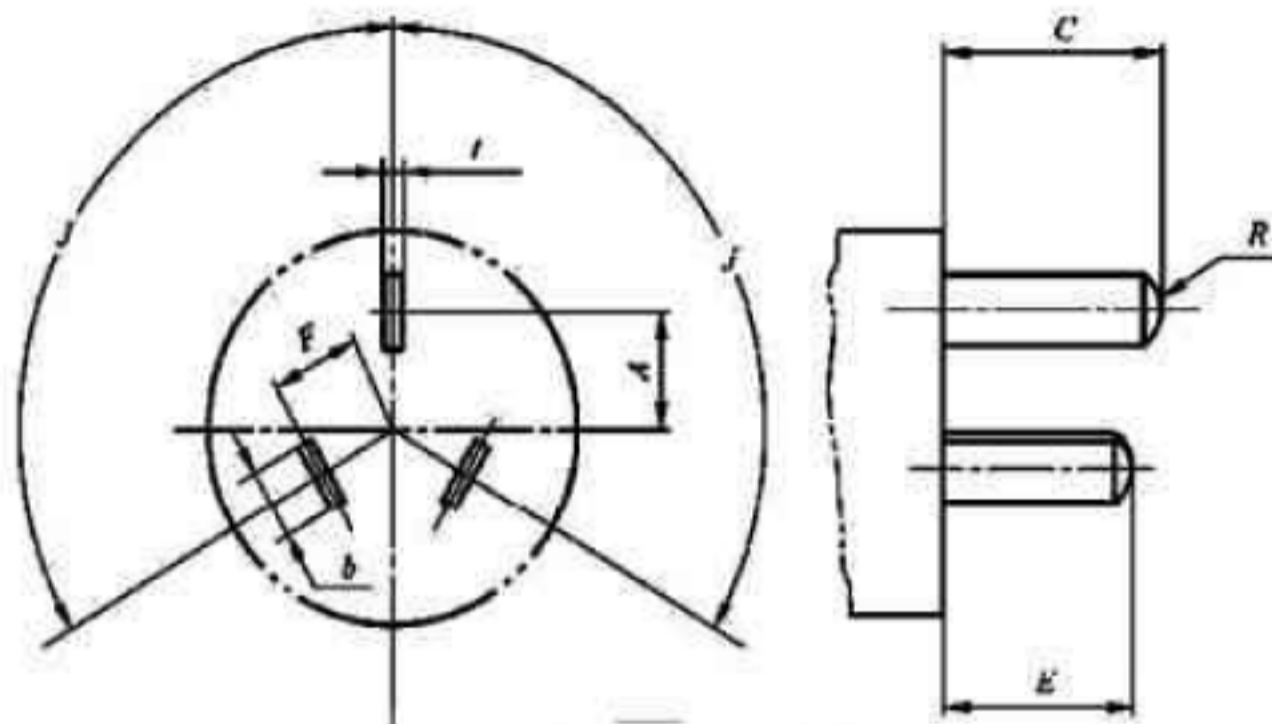


图3 单相两极带接地插头

表3 单相两极带接地插头的基本参数和尺寸

基本参数		两极带接地插座的主要尺寸/mm							
额定电压/ V	额定电流/ A	开档距离				插头插销尺寸			
		A	F	f	l	b	C <sup>a</sup>	E <sup>a</sup>	R
250	6 <sup>a</sup>	10.3±0.14	7.9±0.11	120°±30'	1.5 <sup>-0.10</sup> <sub>0</sub>	6.4 <sup>-0.40</sup> <sub>0</sub>	21±0.42	18±0.35	6.0±1
	10	10.3±0.14	7.9±0.11	120°±30'	1.5 <sup>-0.10</sup> <sub>0</sub>	6.4 <sup>-0.40</sup> <sub>0</sub>	21±0.42	18±0.35	6.0±1
	16 <sup>a</sup>	11.1±0.14	9.5±0.11	120°±30'	1.8 <sup>-0.10</sup> <sub>0</sub>	8.1 <sup>-0.20</sup> <sub>0</sub>	21±0.42	18±0.35	6.0±1

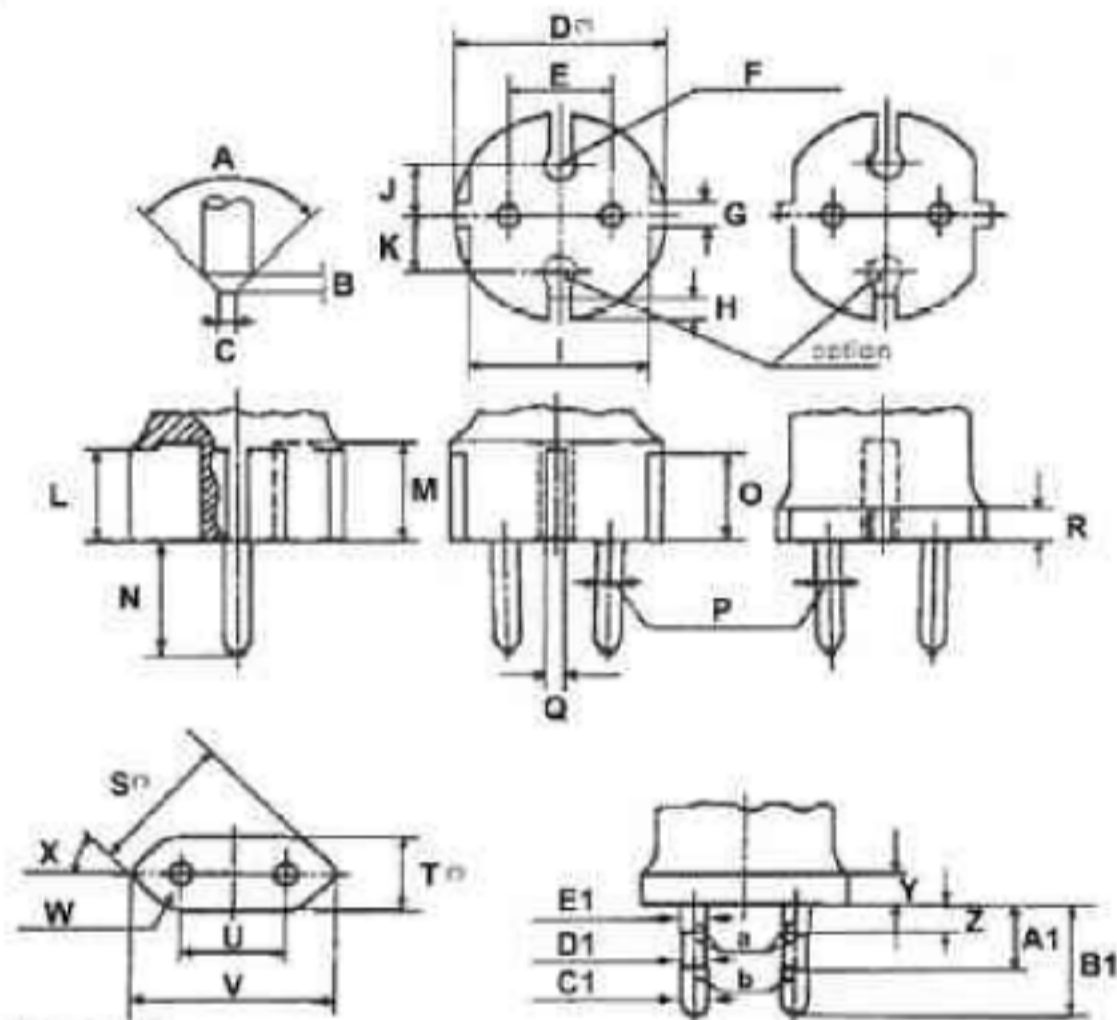
<sup>a</sup> 仅作不可拆线插头用。  
<sup>b</sup> C、E端部厚度适当倒角,推荐倒角长度最大为1 mm。  
<sup>c</sup> 16A2P 仅作不可拆线插头用



韩国插脚



Dimension Checking for Korea plugs (Two-pole plug for 3A 250V)  
According to KSC 8305



a: insulating collar  
b: metal pin

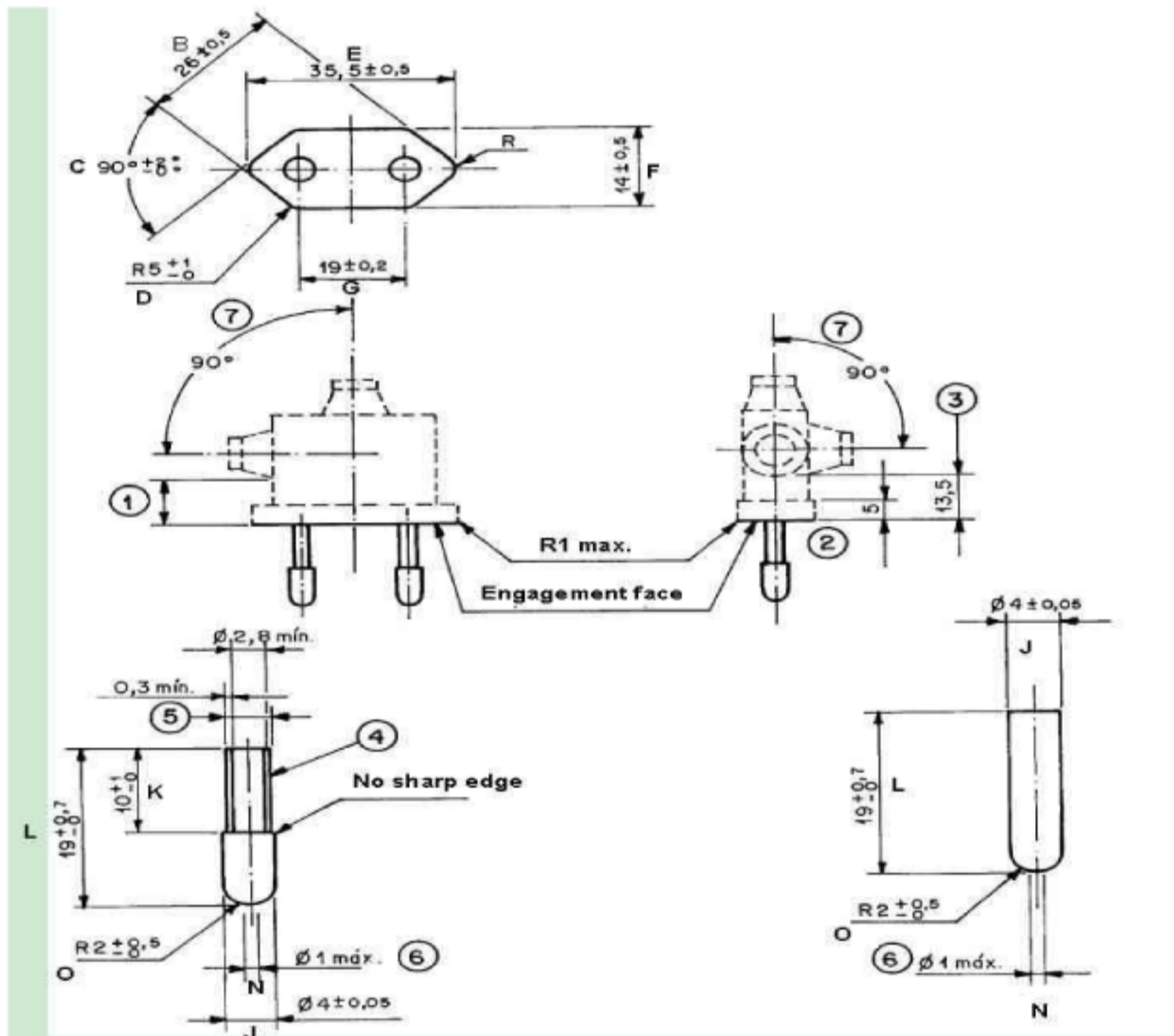
(\*) These dimensions shall not be exceeded within a distance of 18mm from the engagement face of the plug.

1. The sketches are not intended to govern design except as regards the dimensions shown.
2. Pin ends shall be rounded, or conical as shown in detail sketch.

Symbol	Requirement (mm)	Measured (mm)	Symbol	Requirement (mm)	Measured (mm)
A	Max. 90°	--	Q	3.3 ~ 4.3	--
B	Max. 3	--	R	Min. 6	--
C	Max. $\phi$ 2.5	--	S	25.6 ~ 26.6	26.1
D	$\phi$ 36.0 ~ $\phi$ 37.0	--	T	13.0 ~ 14.4	13.95
E	18.8 ~ 19.2	--	U	18.8 ~ 19.2	19.09
F	R3.0 ~ R3.3	--	V	34.6 ~ 36.0	35.62
G	3.5 ~ 4.5	--	W	R5 ~ R6	5.81
H	Min. 5	--	X	45°	45°
I	31.5 ~ 32.5	--	Y	Min. 4	--
J	9.9 ~ 10.1	--	Z	4	4
K	9.9 ~ 10.1	--	A1	10.0 ~ 11.0	10.2
L	Min. 16.5	--	B1	18.5 ~ 19.5	19.2
M	Min. 17.5	--	C1	$\phi$ 4.74 ~ $\phi$ 4.86	4.77
N	18.5 ~ 19.5	--	D1	Max. 4.3	4.0
O	Min. 15.5	--	E1	4.4 ~ 4.8	4.7
P	$\phi$ 4.74 ~ $\phi$ 4.86	--			

巴西 2PIN插脚

Equipment's combined with two-pole plug (Class II) 10 A/250V a.c. (figure 13. NBR 14136: 2002)



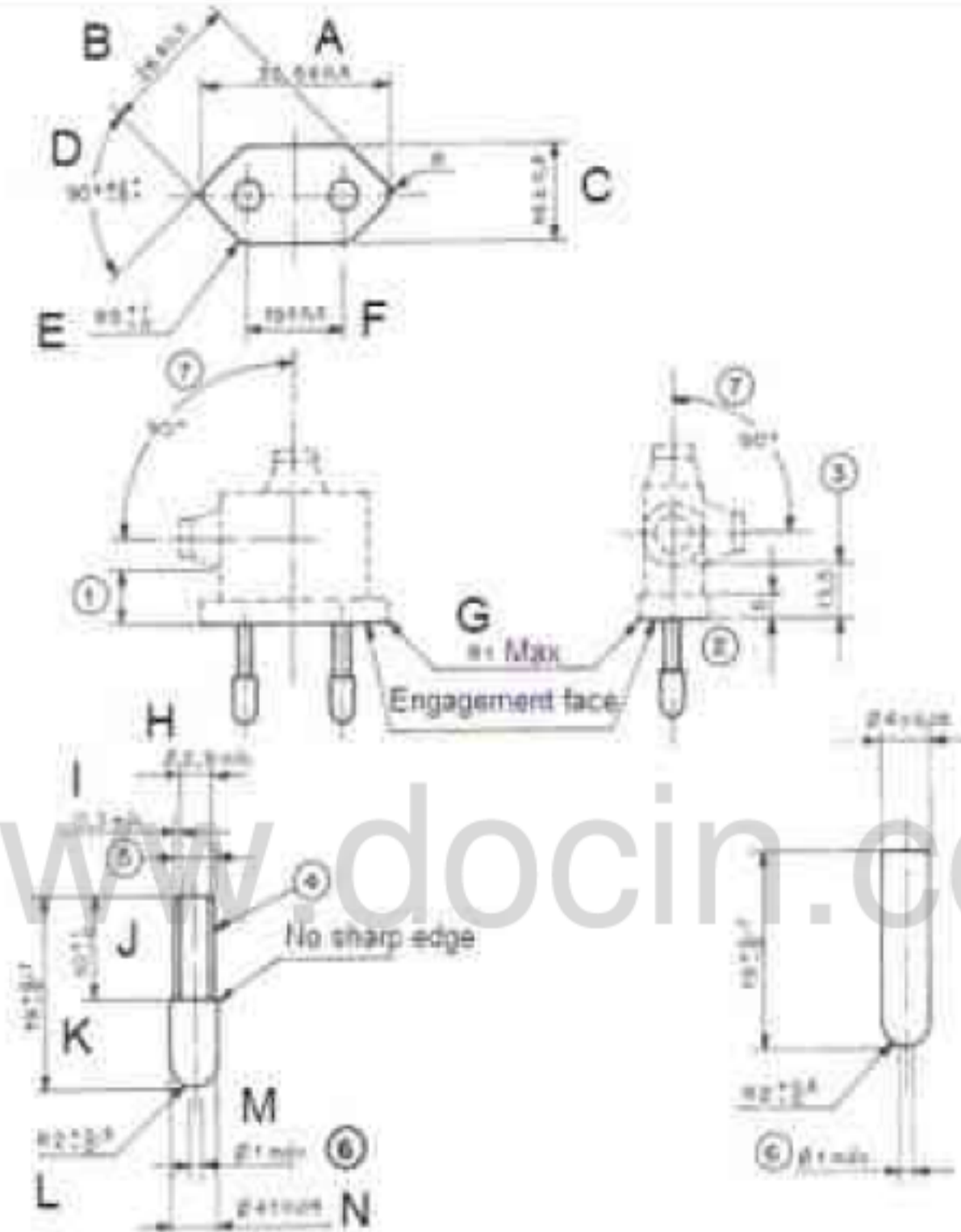




NBR 14136:2002-Figure 13.

poles without earthing contact (for class II equipment) until 10A, 250V~

2



Optional construction without the insulating sleeves.

**Notes:**

- 1 The sketches are not intended to govern design, except as regards the dimensions shown.
- 2 Plugs can be rewirable or non-rewirable.

**Key of page 20:**

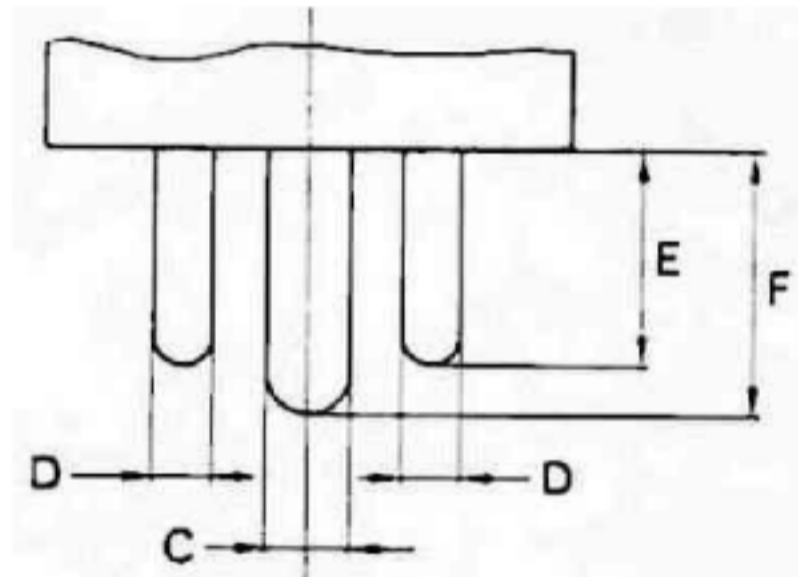
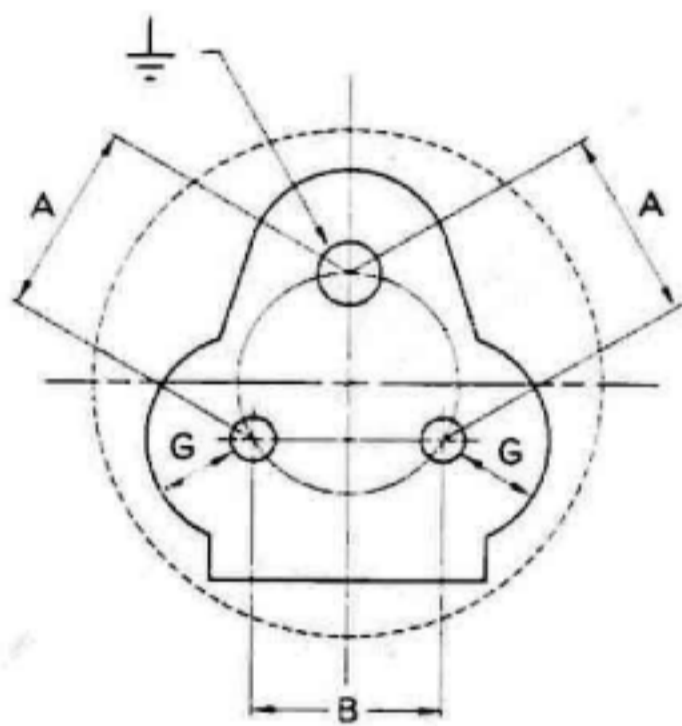
- 1- The distance between the engagement face and the cord or cord guard, if any, shall be at least 14 mm.
- 2- Within this distance, the outline shall be not smaller than the engagement face.
- 3- Within this distance, the outline shall be not larger than the engagement face.
- 4- Insulating sleeves on the current-carrying pins are optional. If the insulating sleeves are separate parts, they shall enter the plug by at least 3mm measured from the engagement face.
- 5- The external diameter of the insulating sleeves shall not be larger than the diameter of the uninsulated part of the pins.
- 6- To avoid damage to shutters, the ends of the pins shall show neither sharp edges nor burrs. They shall be of rounded shape as shown.

**"BR plug portion" according to Standard Sheet NBR 14136:2002 – FIGURE 13**

7:	Table: Dimension of plug (Standard Sheet NBR 14136:2002 – FIGURE 13)			P
	Dimension	Required	Measured	—
A	Length of plug base	35.5±0.5mm	35.3 mm	P
B	Diagonal dimension of plug base	26±0.5mm	26.0 mm	P
C	Width of plug base	14±0.5mm	13.9 mm	P
D	Angle of two diagonal surface	90-92°	90°	P
E	Chamfer radius of plug base	R5-6 mm	5.0 mm	P
F	Between two pins	19±0.2mm	19.1 mm	P
G	Chamfer radius of plug side face	≤ R=1mm	0.5 mm	P
H	Diameter of pin (metallic part covered by sleeve)	≥ 2.8mm	3.0 mm	P
I	Thickness of insulating sleeve	≥ 0.3mm	0.76 mm	P
J	Length of pin except metal part	10-11 mm	10.4 mm	P
K	Pin length	19.0-19.7 mm	19.4 mm	P
L	Radius of pin top	R2-2.5mm	2.5 mm	P
M	Diameter of flat top of pin	≤ 1mm	0.9 mm	P
N	Diameter of pin (metallic part)	4±0.05 mm	3.96mm	P
①	≥ 14mm		18.5 mm	P
②	Within 5mm, the outline shall be not smaller than the engagement face		Outline is the same as the engagement face	P
③	Within 13.5mm, the outline shall be not larger than the engagement face.		Outline is not larger than the engagement face	P
④	If the insulating sleeves are separate parts, they shall enter the plug by at least 3mm measured from the engagement face.		Sleeves integrated with pin	N/A
⑤	external diameter of the insulating sleeves	≤ Diameter of pin (metallic part)	3.64mm < 3.96 mm (metallic part)	P
⑥	shape of edge		rounded shape	P
⑦	orientation of the entry of the flexible cable	Within 90°	—	N/A

印度插脚:

Indian Plug Checking Worksheet 标准: IS1293



Dimension: mm

www.docin.com

Symbol	Rated Current		Measured
	( ) 6A	( ) 16A	
A	22.22±0.15	28.6±0.15	
B	19.1±0.15	25.4±0.15	
C	7.010-7.085	8.660-8.735	
D	5.030-5.105	7.010-7.085	
E	15.77-16.94	20.47-21.64	
F	20.47-21.64	28.47-29.64	
G <sup>1)</sup>	≥7.94	≥9.52	

Note:

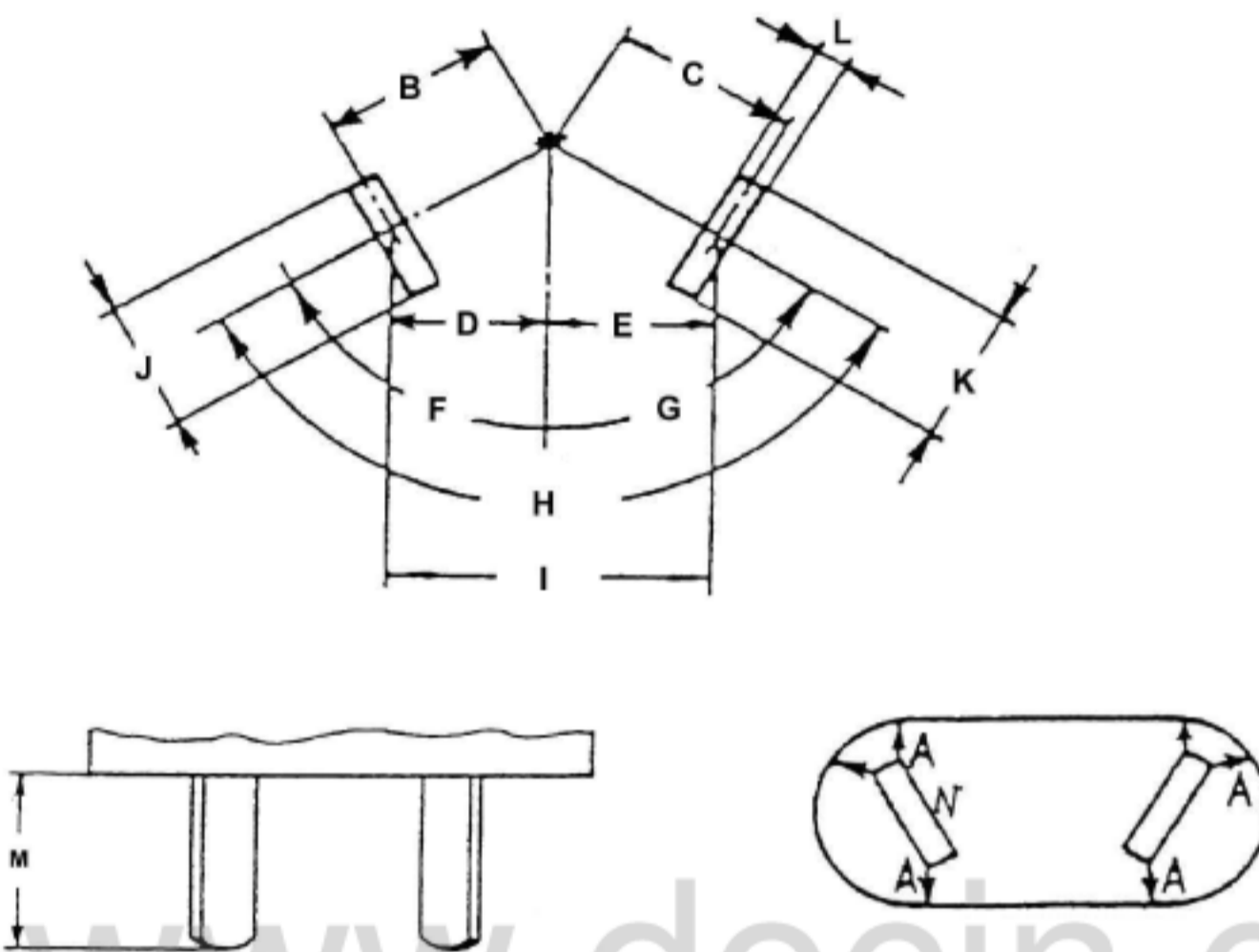
1. "G" is the minimum distance between the pins and the periphery of the plug.  
"G" 是引脚和插头的边缘之间的最小距离。

阿根廷插脚:



**IRAM 2063 Plug (Class II, two-pole) Checking Worksheet**

(IRAM 2063: 1982 + Amd 1999)



Dimensions and geometry for two poles electric plugs without earth contact for alternative current, nominal voltage of 250 V and nominal current of 10 A

**Note 1:** The position of the plug neutral pin (N), was made considering their pins are pointing to the observer.

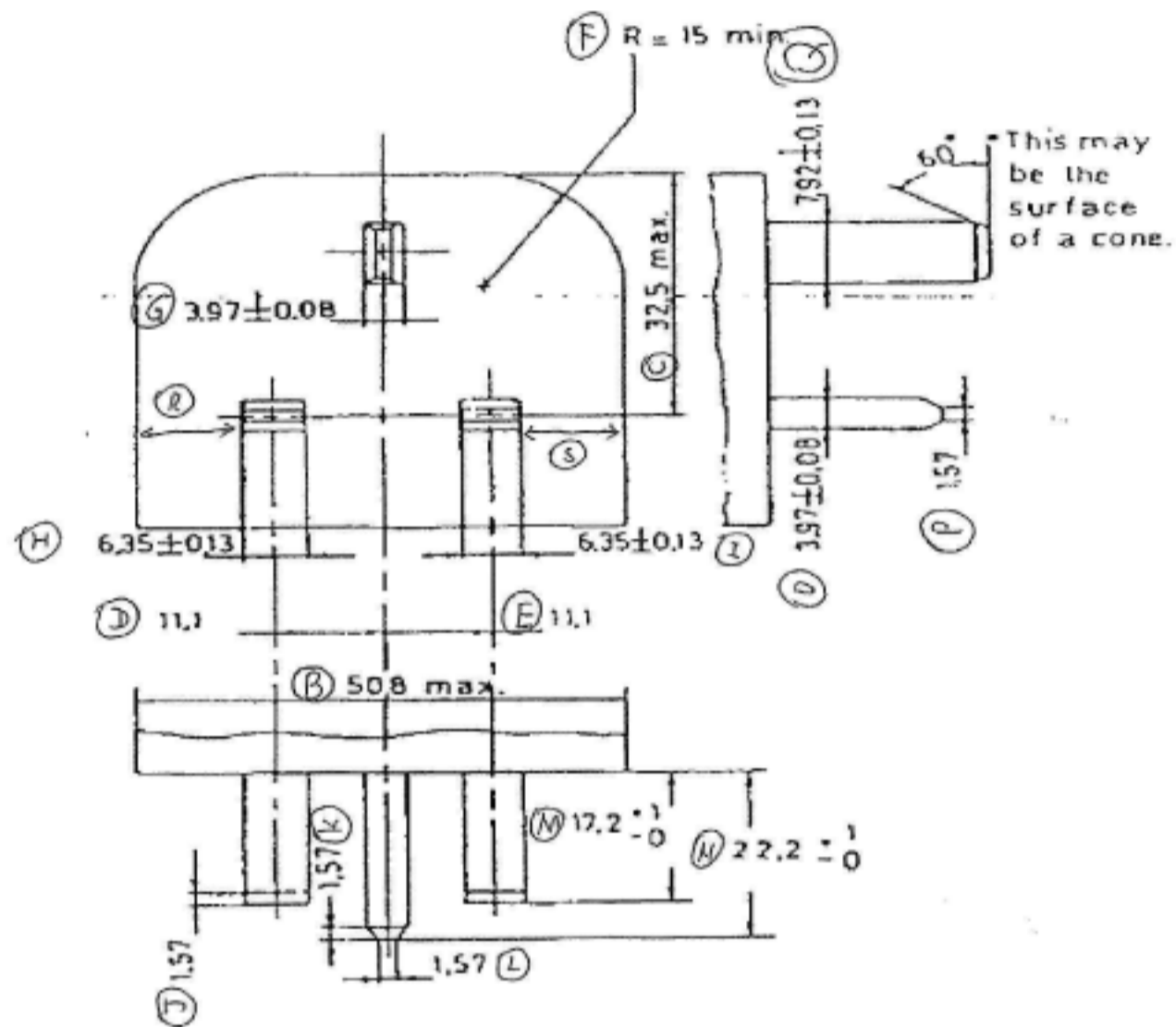
**Note 2:** Dimensions are indicated in millimeters.

**Note 3:** When calipers are not indicated in IRAM 2063, its dimensions shall be verified with instruments that allow a resolution of 0,01 mm.

Symbol	Requirement (mm)			Symbol	Requirement (mm)	
A	8.0 min.			H	120±5°	
B	7.92±0.1			I	13.72±0.1	
C	7.92±0.1			J	6.25±0.1	
D	6.86±0.1			K	6.25±0.1	
E	6.86±0.1			L	1.55±0.07	
F	60°			M	18.2±0.2	
G	60°			N	Marking of neutral with N	N

沙特插脚:

SASO Plug Checking Form according to Figure 1 of SASO 2203



Dimensions : Millimeters

Symbol	Requirement (mm)	Measured (mm)	Symbol	Requirement (mm)	Measured (mm)
A	--		K	1.57	
B	50.8 max.		L	1.57	
C	32.5 max.		M	17.2 - 18.2	
D	11.1		N	22.2-23.2	
E	11.1		O	3.89 - 4.05	
F	R 15 min.	Check by gauge	P	1.57	
G	3.89 - 4.05		Q	3.89 - 4.05	
H	6.22 - 6.48		R	R 9.5 min	
I	6.22 - 6.48		S	R 9.5 min	
J	1.57				



日规2PIN插脚胶壳--JIS C 8303:2007



JIS C 8303: 2007

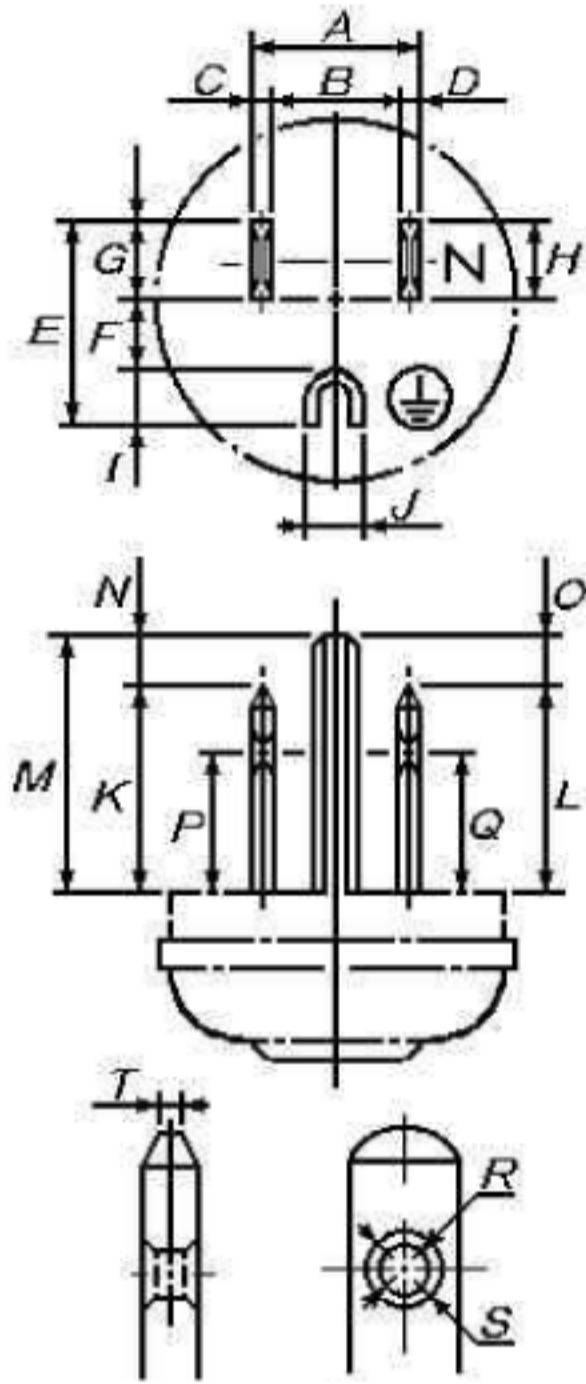
Location	Requirement (mm)	Measured (mm)
A	12.7	12.7
B	$B \geq 10.8$	11.15
C	$1.5 \pm 0.1$	1.46
D	$1.5 \pm 0.1$	1.46
E	$6.3 \pm 0.3$	6.27
F	$8 \pm 0.2$	6.27 (Notes 1)
G	$14.6 \geq G$	13.95
H	$17 \pm 1.3$	17.04
I	$11.7 \pm 0.4$	12.0
J	$J \geq \varnothing 3.5$	3.6
K	$\varnothing 3.3 \geq K \geq \varnothing 2.8$	3.11
L	$0.9 \geq L$	0.86

Notes:  
 1) In case of those without having distinction of polarity, the width of blade shall be same as the left side blade spec is  $6.3\text{mm} \pm 0.3\text{mm}$ .

备注:

- 关于电源插墙式插脚: 起始于金属插脚的任意一点, 与金属插脚的托台圆周边之间的距离不得小于5.1 mm。
- 顶部“L”的厚度小于0.9mm.

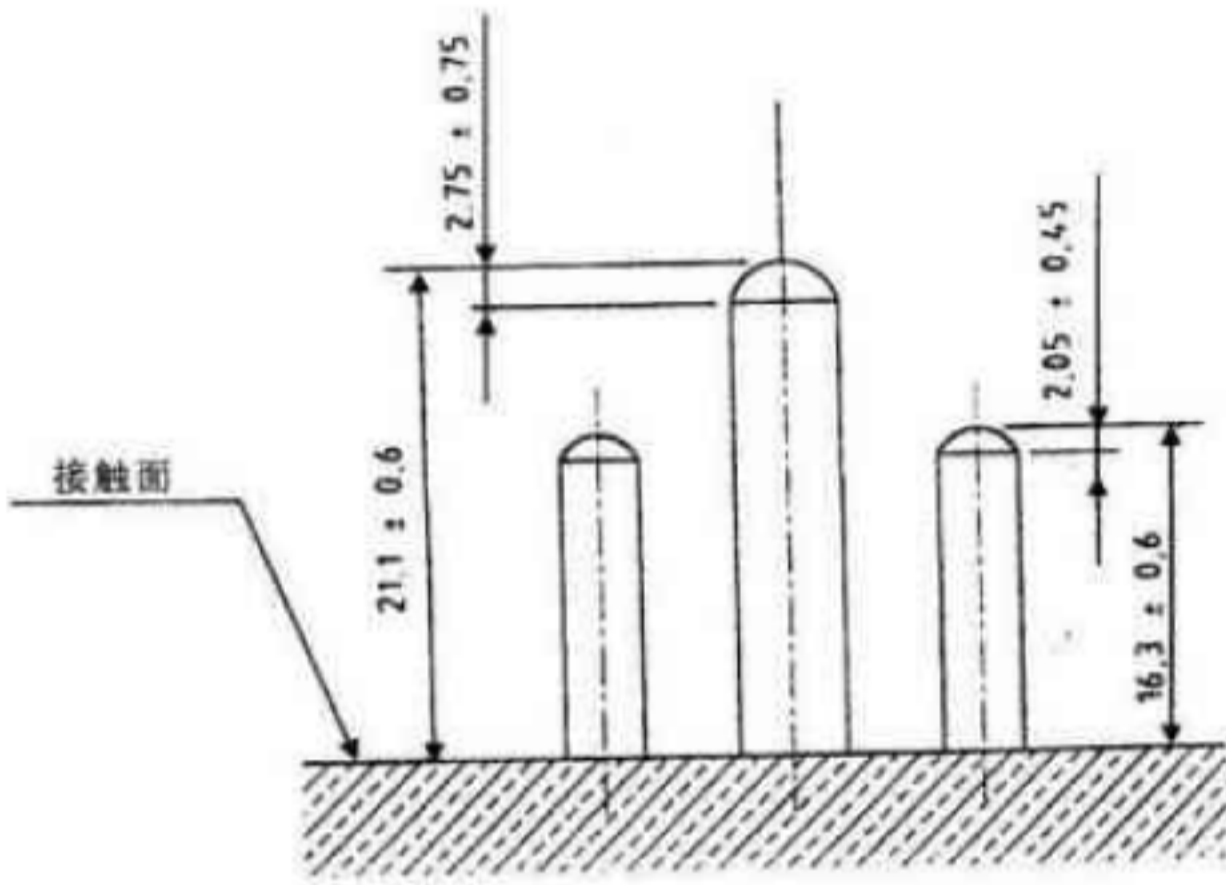
Dimensions checked by gauge and measurement



Position	Required (mm)	By Measurement
A	<14.6	
B	>10.8	
C	1.35 – 1.65	
D	1.35 – 1.65	
E	--	--
F	--	--
G	6.0 – 6.6	
H	6.0 – 6.6	
I	--	--
J	--	--
K	15.7 – 18.3	
L	15.7 – 18.3	
M	--	--
N	--	--
O	--	--
P	11.3 – 12.1	
Q	11.3 – 12.1	
R	$\phi 2.8 - \phi 3.3$	
S	$> \phi 3.5$	
T	<0.9	

www.docin.com

小南非插脚



www.docin.com

